

## NORBIT - iWBMS TURNKEY MULTIBEAM SONAR SYSTEM

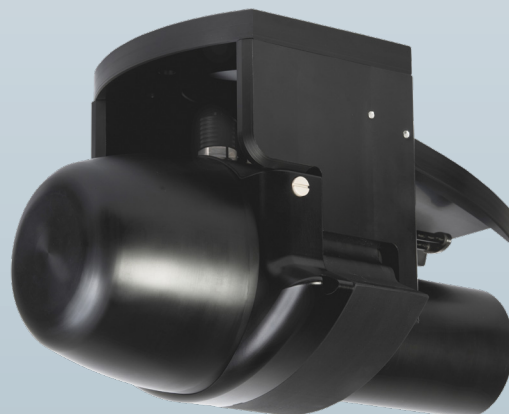
For High Resolution Bathymetry

Compact and high-resolution curved array bathymetric mapping system by NORBIT.

This all-in-one tightly integrated broadband multibeam turnkey solution offers high resolution bathymetry over a wide swath. The high-end sonar with Applanix WaveMaster II (globally leading GNSS/INS system) embedded into the unit ensures fast and reliable mobilisation and highest quality sounding for surveys in all conditions.

The WBMS-series are based on a flexible sonar platform that utilizes the latest in analogue and digital signal processing. With broad R&D expertise, NORBIT has developed, from the ground-up, exciting new technology that allows existing and new applications to benefit from the advantages offered by a compact wideband curved-array multibeam sonar.

Supported by DCT (Data collection Tool) for data acquisition.



### Features

- ✓ Multibeam Sonar with Integrated Inertial Navigation System & Integrated NTRIP Client
- ✓ 80kHz Bandwidth
- ✓ Roll-stabilisation
- ✓ Backscatter outputs (Intensity, Sidescan, Sidescan Snippets, Snippets, Water Column)
- ✓ Multidetect
- ✓ Simple Ethernet Interface
- ✓ Integrated Sound Velocity Probe
- ✓ Hydrodynamic Fairing
- ✓ Mounting Bracket Included
- ✓ FM & CW Processing
- ✓ Flexible Power
- ✓ Exceeds IHO *Special Order*, CHS *Exclusive Order* & USACE *New Work*

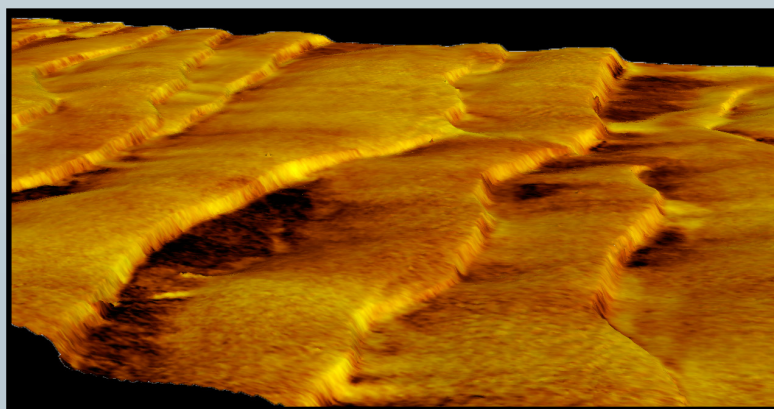
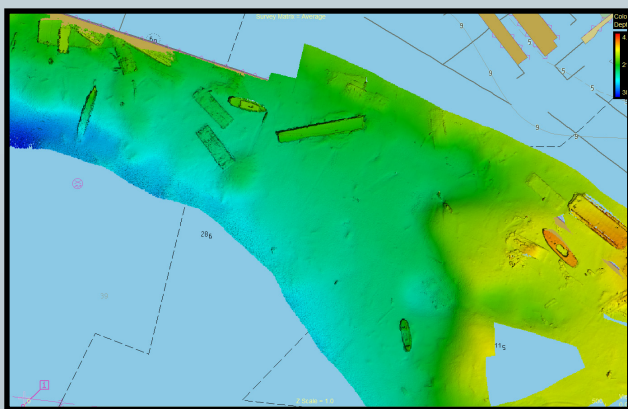
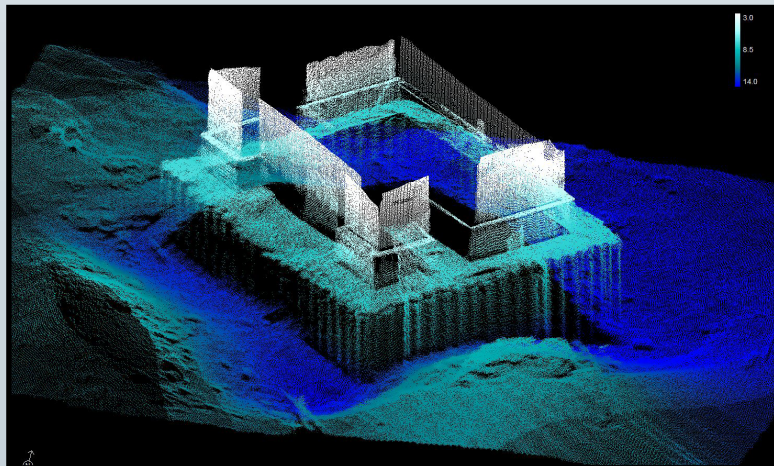
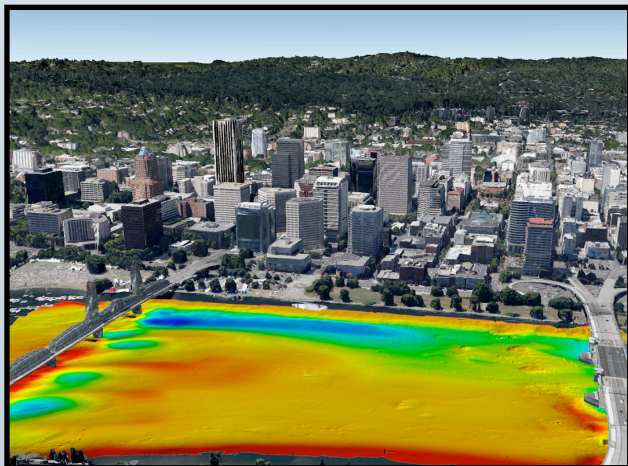
### Applications

- ✓ Shallow Water Bathymetry
- ✓ Pipeline Surveys
- ✓ Pond, River and Estuary Surveys
- ✓ Harbor and Lake Surveys
- ✓ Unmanned Surface Applications (AUV or ASV)
- ✓ Coastal Surveys

### Options

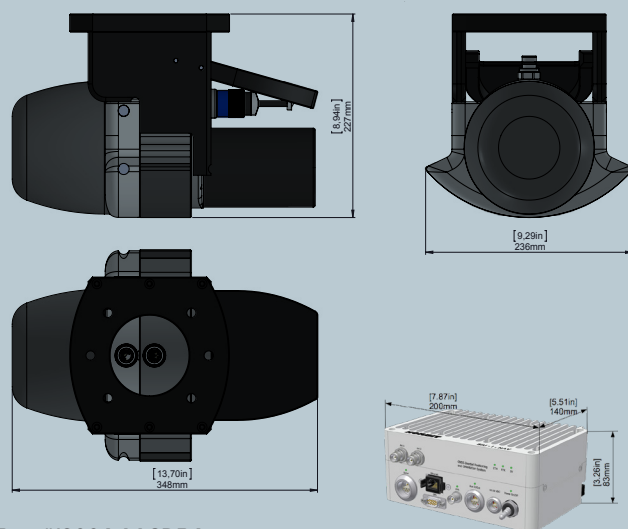
- ✓ Sound Velocity Profiler
- ✓ Data Collection Tool (DCT)
- ✓ Turnkey Survey Solutions
- ✓ Permanent Hull Mount Option
- ✓ Pole Mount and Travel Option
- ✓ 200kHz Version
- ✓ Backscattering Strength Output
- ✓ Narrow Beam Option
- ✓ High-end INS
- ✓ Acquisition, Navigation and Post Processing Software
- ✓ Senior Hydrographer for Support and Training
- ✓ Can be Delivered with Software Packages e.g. DCT, HYPACK, Qinsy, EIVA, CARIS and Others

# NORBIT iWBMS Wideband Multibeam Sonar For High Resolution Bathymetry



## TECHNICAL SPECIFICATION

SWATH COVERAGE	5-210° FLEXIBLE SECTOR (SHALLOW WATER IHO SPECIAL ORDER >155°)
RANGE RESOLUTION	<10mm ACOUSTIC w. 80kHz BANDWIDTH
NUMBER OF BEAMS	256-512 EA & ED
OPERATING FREQUENCY	NOMINAL FREQUENCY 400kHz (FREQUENCY AGILITY 200-700kHz)
DEPTH RANGE	0.2-275m (>300m WITH 0.9° X 0.9° OPTION)
PING RATE	UP TO 60Hz, ADAPTIVE
RESOLUTION (ACROSS X ALONG)	STANDARD: 0.9° X 1.9° @400kHz AND 0.5° X 1.0° @700kHz. NARROW OPTION: 0.9° X 0.9° @400kHz AND 0.5° X 0.5° @700kHz
POSITION	HOR: ±(8mm +1ppm X DISTANCE FROM RTK STATION) VER: ±(15mm +1ppm X DISTANCE FROM RTK STATION) (ASSUMES 1m GNSS SEPARATION)
HEADING ACCURACY	0.03° (RTK) WITH 2m ANTENNA SEPARATION
PITCH/ROLL ACCURACY	0.02° INDEPENDENT OF ANTENNA SEPARATION
HEAVE ACCURACY	2 cm OR 2% (TRUEHEAVE™), 5 cm OR 5% (REAL TIME)
WEIGHT	8.5kg (AIR) 3.5kg (WATER)
INTERFACE	ETHERNET
CABLE LENGTH	STD 8m, OPT: 2m, 25m AND 50m
POWER CONSUMPTION	60W (10-28VDC, 110-240VAC)
OPERATING TEMP.	-4°C to +40°C (TOPSIDE -20°C to +55°C)
STORAGE TEMP.	-20°C to +60°C
ENVIRONMENTAL	TOPSIDE: IP67: DUST TIGHT, PROTECTED AGAINST THE EFFECT OF IMMERSION UP TO 1m/WET-END (SONAR): 100m



Part #12004-AACDB4

NORBIT SUBSEA | STIKLESTADVEIEN 11 | N-7041 TRONDHEIM | NORWAY | PHONE +47 73 98 25 50 | [subsea@norbit.com](mailto:subsea@norbit.com)

COPYRIGHT©2020 NORBIT, ALL RIGHTS RESERVED. WHILE EVERY EFFORT IS MADE TO ENSURE THE INFORMATION GIVEN IS ACCURATE, NORBIT DOES NOT ACCEPT LIABILITY FOR ANY ERRORS OR OMISSIONS, ALL WEIGHTS AND MEASURES ARE APPROXIMATE AND OTHER INFORMATION IN THIS DOCUMENT IS SUBJECT TO CHANGE WITHOUT NOTICE