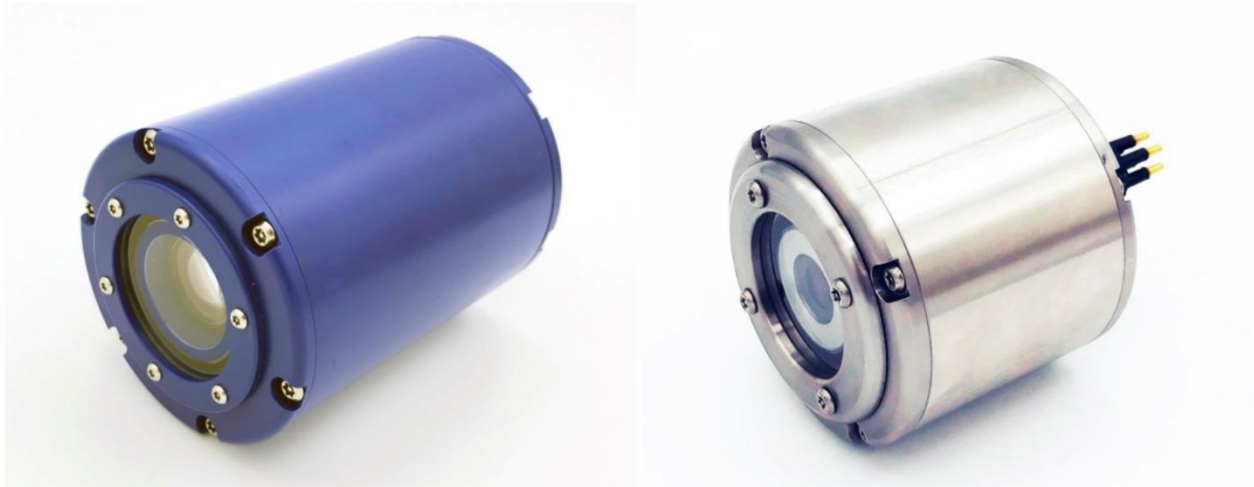


Eagle IP™ Camera

OTAQ – High quality underwater
low light color IP/Ethernet cameras



OTAQ Eagle IP™ Cameras deliver an incredible blend of high-performance specifications and features in a cost effective package.

Class leading low light colour optics are the key to the superb HD image that our camera produces. The camera is available as either a fixed focus (F) or 18x optical zoom (Z) model with all models having up to 1080P resolution and light sensitivity as low as 0.001 lux. Eagle IP™ cameras are available in a wide range of depth ratings from 300m to 6000m and materials including acetal, anodised aluminium and stainless steel.

Our GUI gives you full control of zoom, resolution, brightness, saturation, hue, stills capture/ recording capability and control of up to 8 cameras simultaneously.

IP Integration Products

EAGLE IP™ cameras have been designed to work with our Q-LINK and Q-HUB network infrastructure products to provide a complete underwater IP camera network or get full HD video over your existing STP copper umbilical.

Suitable Applications

- Commercial ROVs and AUVs of all sizes
- Monitoring platforms
- Landers
- Marine renewables inspection
- Touchdown monitoring
- Oceanographic research

Eagle IP Zoom						Eagle IP Fixed			
Model	IPZ/300	IPZ/1000	IPZ/1000	IPZ/4000	IPZ/6000	IPF/300	IPF/1000	IPF/4000	IPF/6000
Lens	4.7-84.6 mm Motorized 18 x Zoom Lens					3.6 mm Fixed (digital zoom through GUI)			
Material	Acetal	Anodised Aluminium	Stainless Steel	Anodised Aluminium	Titanium	Acetal	Anodised Aluminium	Anodised Aluminium	Titanium
Depth rating	300m	1000m	1000m	4000m	6000m	300m	1000m	4000m	6000m
Power	18-30vDC@250mA					18-30vDC@200mA			
Transmission	H.264, ONVIF, RTSP								
Data	10/100 BaseT Ethernet								
Min light	0.001 lux								
Latency	400ms								
Max res	1920x1080 (1080P @25fps) variable through GUI								
Field of view	60°~4.5°in air, 45°~3.3°in water					98°in air, 73°in water			
Connector	MCBH6M wet mat								
Part no	OS-120100	OS-120105	OS-120106	OS-120110	OS-120115	OS-120200	OS-120205	OS-120210	OS-120220