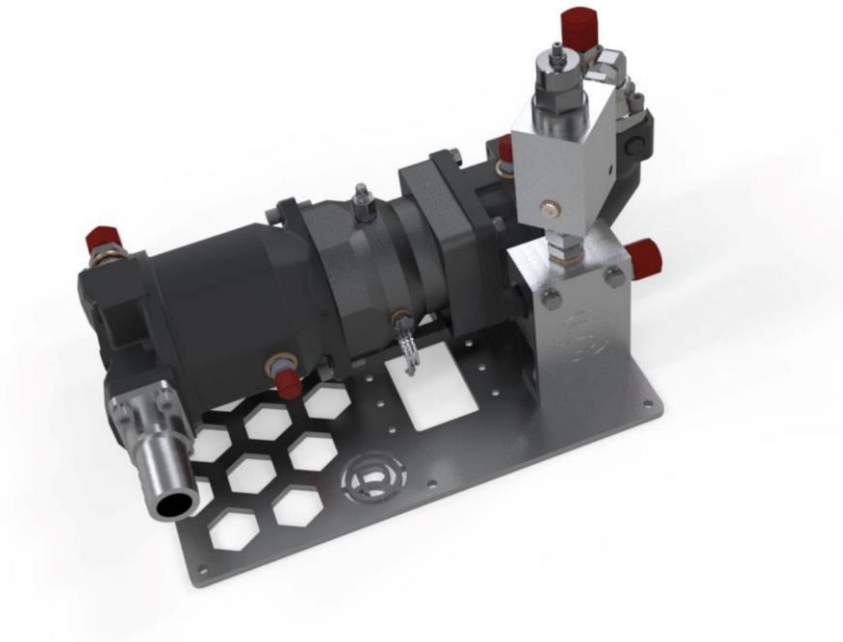


Dirty Work Pack

Operation & Maintenance Manual



The 120 LMin Dirty Work Pack (RQ-071) is designed to protect the hydraulic circuit of the ROV against external contamination during fluid transfer operations. It utilizes a hydraulic motor powered by the ROV hydraulic circuit to drive a pump which supplies the delivery fluid from an external compensated reservoir. This configuration isolates the ROV hydraulic circuit from the delivery fluid circuit and therefore prevents the ingress of contaminants from the external equipment or seawater into the ROV circuit.

Dirty Work Pack Specifications

Length	640 mm
Breadth	480 mm
Height	345 mm
Weight in air	70.5 kg
Maximum depth	3,000 m

Compensator Specifications

Length	580 mm
Breadth	400 mm
Height	400 mm
Weight in air	25 kg
Capacity	16 litres
Maximum depth	3,000 m

Hydraulic Specifications

Maximum inlet pressure	4,000 psi (275 bar)
Maximum inlet pressure	180 LPM
Maximum outlet pressure	3,000 psi (207 bar)
Maximum outlet flow rate	120 Lmin
Suction	2" hose barb
Output	12 JIC
Pressure	12 JIC
Return	16 JIC
Case drain	8 JIC
Pilot	4 JIC