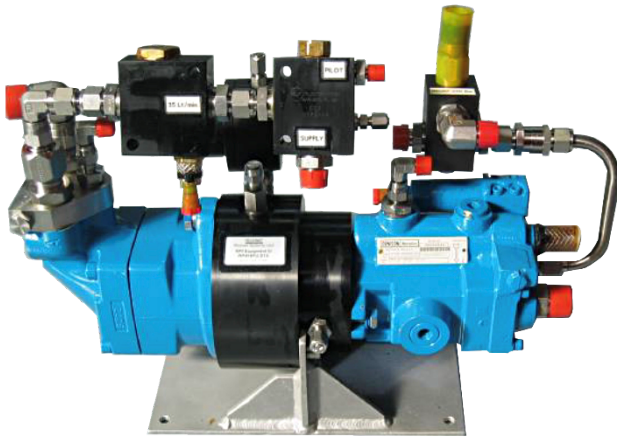


Independent Hydraulic Power Pack Unit (IHPU)



The ROV Independent Hydraulic Power Pack Unit (IHPU) is suitable for subsea applications that require a physically independent hydraulic circuit and yet controlled directly by the ROV. This can be used for operating hydraulic tools, subsea winches, and other types of subsea devices without contaminating the ROV hydraulics.

Specifications

ROV supply pressure	210 bar required for max performance
ROV supply flow rate	55 Lpm required for max performance at 2750 rpm
Max ROV pilot pressure	207 bar
Max pump pressure	240 bar continuous
Max pump flow rate	37 litres per minute
Hydraulic motor type	Parker, F11-19-MB-CH-K, 19cc/rev fixed displacement
Hydraulic pump type	Denison PV6 2RID C02, variable disp, max volume stop pressure compensated, 14.4cc/rev, max speed 2750 rpm
Controls	ROV IHPU ON/OFF PO check valve, ROV supply flow control 0-55 Lpm for motor, run down check valve fitted to motor, safety relief valve for pump., pressure compensator for bell housing
Filtration	3 micron pressure filtration, 12 micron return line filtration
Reservoir	Compensated hydraulic oil reservoir, fitted with over pressure safety valve. Size will change depending on application.
Overall dimensions	540 mm L x 360 mm W x 240 mm H IHPU 235 mm L x 210 mm W x 275 mm H Filter Assembly
Weight	IHPU – 30 kg, Filture unit – 5 kng in air