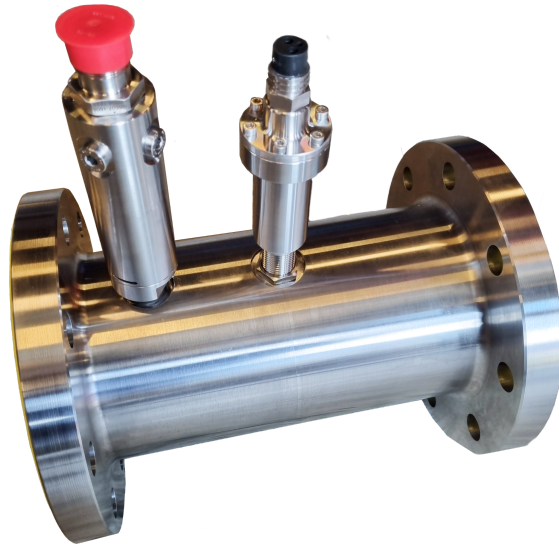


Turbine Subsea Flow Meter ETL/N4/100



Subsea flow meter combined with pressure sensor can be set up with a suction anchor system, this can be connected either to a IVP and logging software or a dual line subsea display.

Key Features

- Highly accurate measurement of flow
- Robust stainless steel construction
- Low pressure drop
- Bi-directional flow capability
- Individual calibration certificates
- Pressure sensor

Specifications

Material	316 Stainless Steel
Size	300 mm x 100 mm
Flange	4" ANSI
Weight	16,5 kgs
Depth	4000 m rated
Flow	450-4500 lpm
Pressure Sensor	0-40 bar