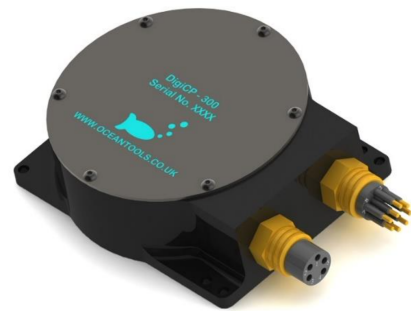


DigiCP combined with Polatrak ROV II



DigiCP-8K



DigiCP-300

Cp probe is a robust and well known system and is easily integrated with an ROV system. Can be used on any windows computer and has an output string for overlay.

Key Features

- Contact or proximity probes
- Optional T-bar or Springy Fishtail handle
- Optional diver-held probe with Surface Interface Unit
- Simultaneous RS232 and RS485 plus optional TTL output
- 300m, 4000m or 8000m depth rating
- Optional transit case and calibration kit (zinc test block, reference electrode cell and adaptor lead) also available

Specifications - DigiCP-4K

Height	117mm (incl connector)
Diameter	112mm
Base Dimensions	112mm x 112mm
Weight in air	1.8kg
Weight in water	0.9kg

Depth Rating	4000m
Input Voltage	10–36VDC
Maximum Current	50mA @ 10VDC
Data Output	RS232 and RS485 (TTL optional)

Specifications - Polatrak ROV II

Weight	1kg
Dimensions	57W x 57H x 292mm
Connector Description	Seacon RMG-3FS
Electrode Elements	AG/AGCl (Silver/Silver Chloride)
Depth Rating	3000m