

MECHANICAL MINI LOCK LATCH w/TERM.BULLET

FOR "LIVE-BOAT" HANDLING OF SMALL/MEDIUM ROV'S

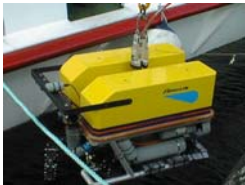
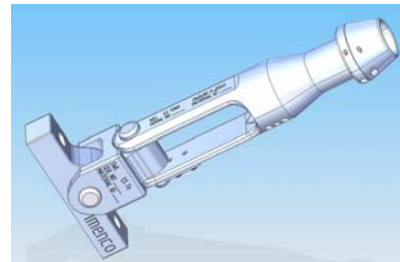


Photo above shows Argus Mariner ROV launch using the minilatch attached on top.



Mini Latch to the left with new improved cable door and termination bullet above with X-Y-adapter and lift rail.

Improve the safety and "well being" of your expensive equipment and valuable personnel. The mini-latch will increase overall safety and ease deployment and recovery of small to medium sized ROV's.

The mini lock-latch enables easy attachment/detachment to the cable using its unique cable entrance door solution.

General description:

Made from Aluminium 6082T6 and stainless S165M steel, the mini-latch weighs only 7 kg in air!. The unique cable door and release mechanism makes it very easy to use. It will self-release in water by attaching a medium sized "Grimsby float" to the release lever, or a release line may be used. The latch unit will attach to its accompanying termination bullet sliding on the umbilical cable even down to a 30° angle above the horizontal. Feedback from our customers is very good, where they all point out the advances this unit gives compared to other launch/recovery scenarios using a live-boating ROV. The unit may also be used for other applications, where there is a messenger line attached. The mini-latch is the smallest in a range of latches from 0 to 12 tons WLL. It is designed according to DnV rules for Certification of Lifting appliances. The latch and termination bullet are delivered as certified pairs to avoid any mismatch between the two. Termination bullets can be delivered whole or split. To date these units are used on Sub-Atlantic -, Argus Remote Systems -, Sutec Sea Owl -, Sea Twin -, Sperre Sub-fighter - and Ocean Modules ROV's.

Technical data:

Safe working load: 1,5 ton WLL

Dynamic factor (DAF): 3x1,5

Weight in air: 7 kg

Materials: Aluminium 6082T6, S165M and 316SS

Umbilical size: up to 33 mm diameter